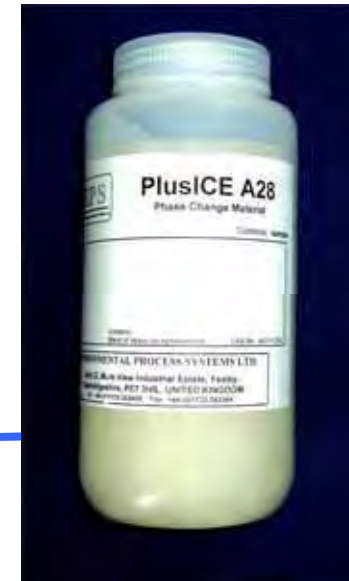


Strictly Private & Confidential

Case Study Fridge with A28 PCM as Subcooler



Strictly Private & Confidential

Case Study Fridge with A28 PCM as Subcooler



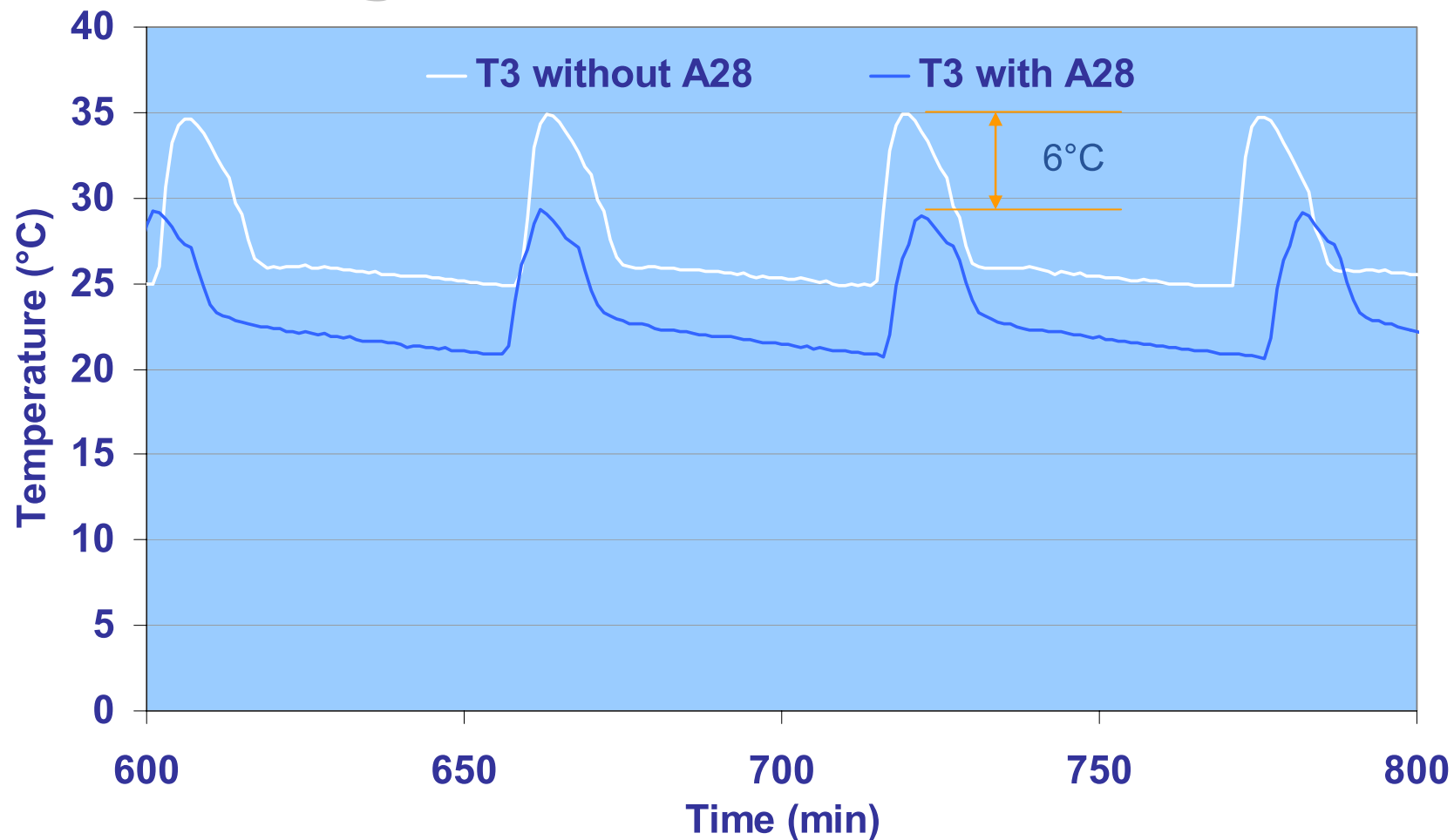
Strictly Private & Confidential

Case Study
Fridge with A28 PCM as Subcooler



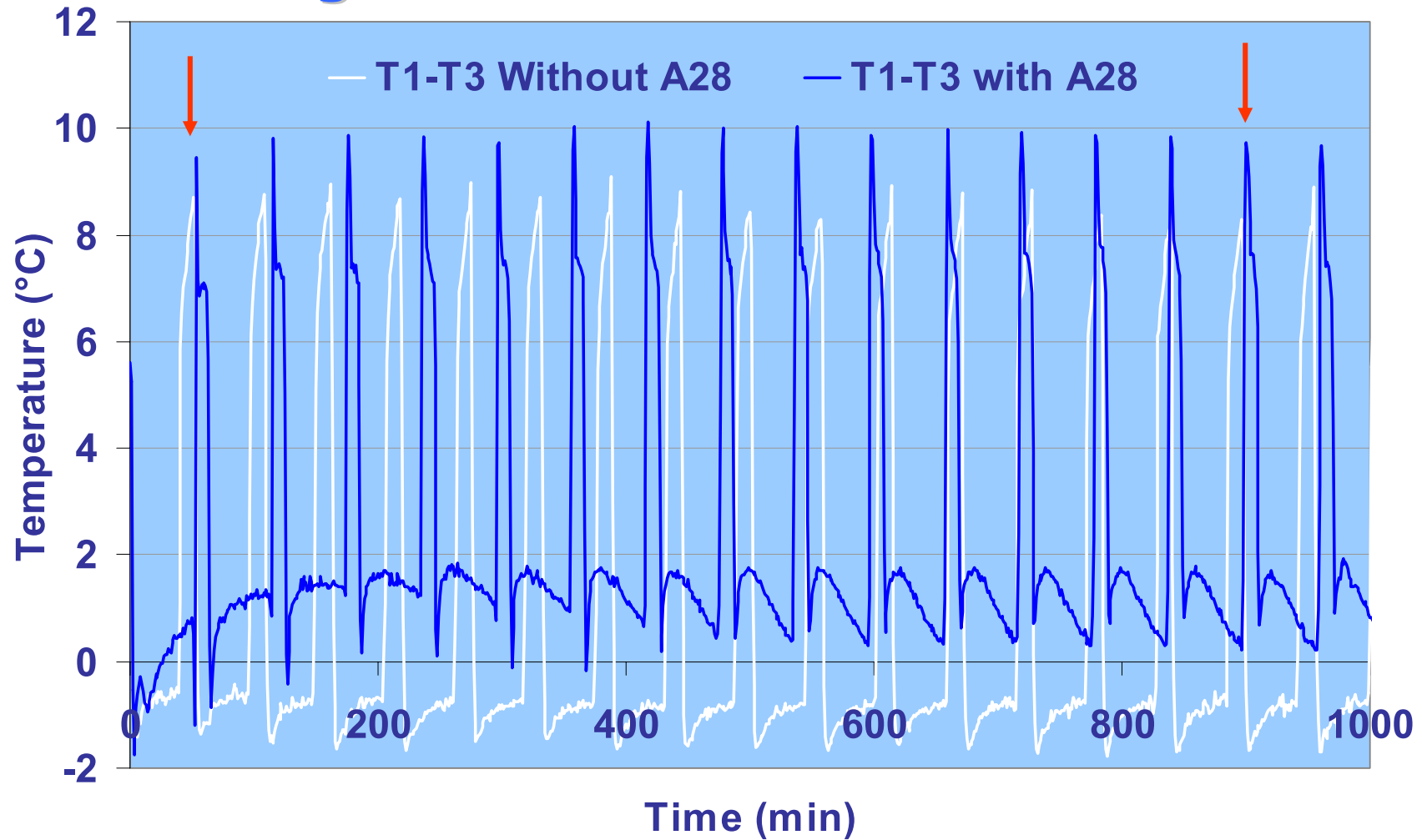
Strictly Private & Confidential

Case Study Fridge with A28 PCM as Subcooler



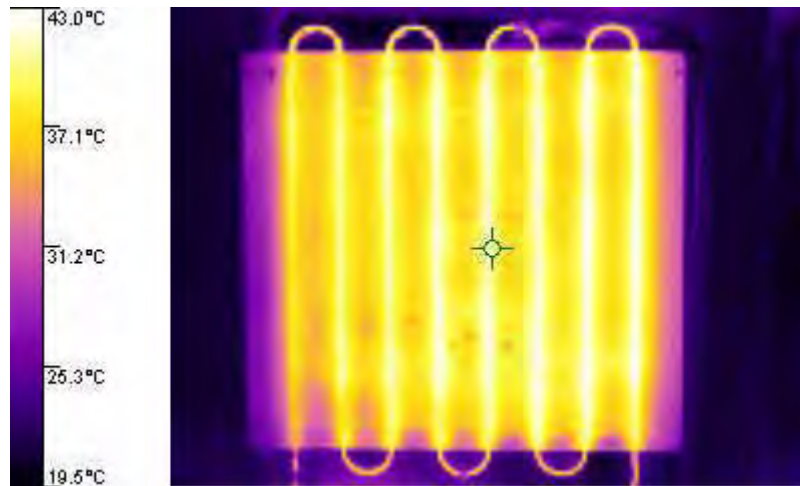
Strictly Private & Confidential

Case Study Fridge with A28 PCM as Subcooler

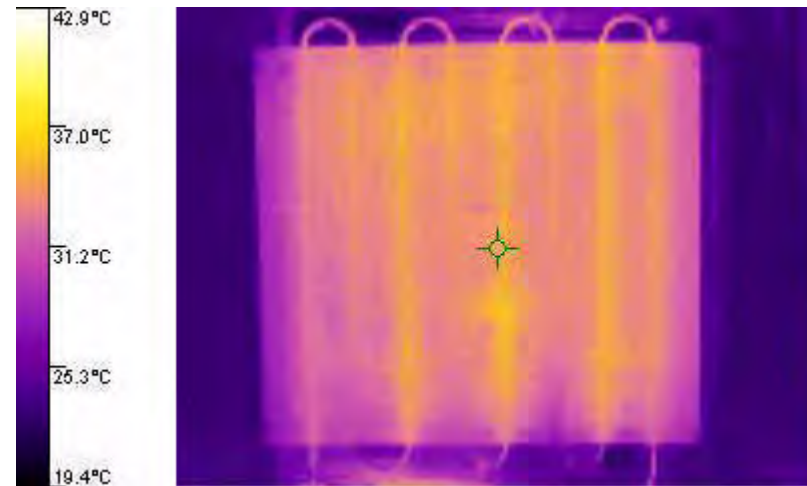


Strictly Private & Confidential

Case Study
Fridge with A28 PCM
IR Images



Without Subcooling



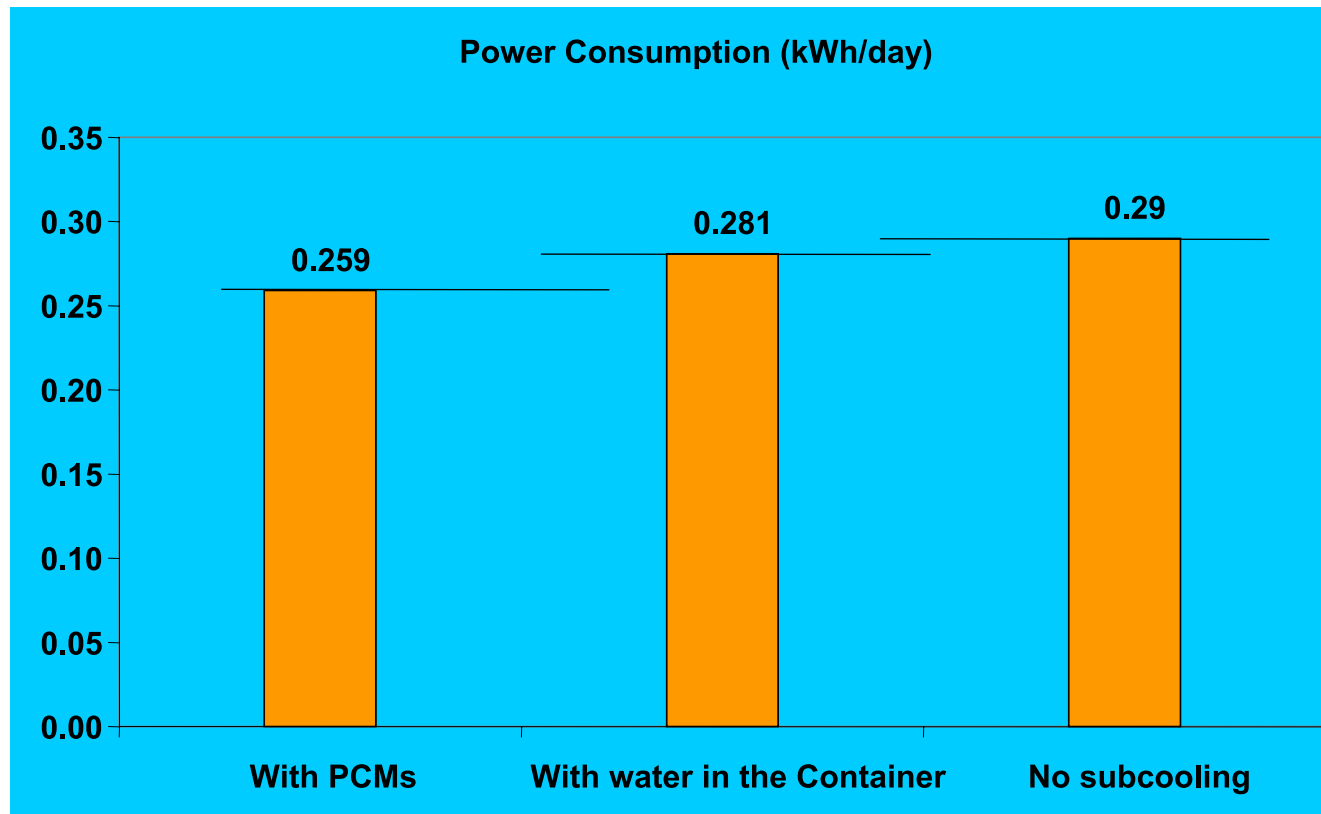
With PCM A28

Strictly Private & Confidential

Case Study

Fridge with A28 PCM as Subcooler

- Comparison of Power Consumption



Strictly Private & Confidential

Case Study Fridge with Subcooling using PlusIce A28

Conclusions

- **With PCM A28, refrigerant temperature before entering the evaporation chamber drop by 6 K.**
- **Compressor start / stop reduced from 24 times per day to 22.5 times per day.**
- **Energy consumption reduced by 6% which could be further improved with a custom-made heat exchanger.**