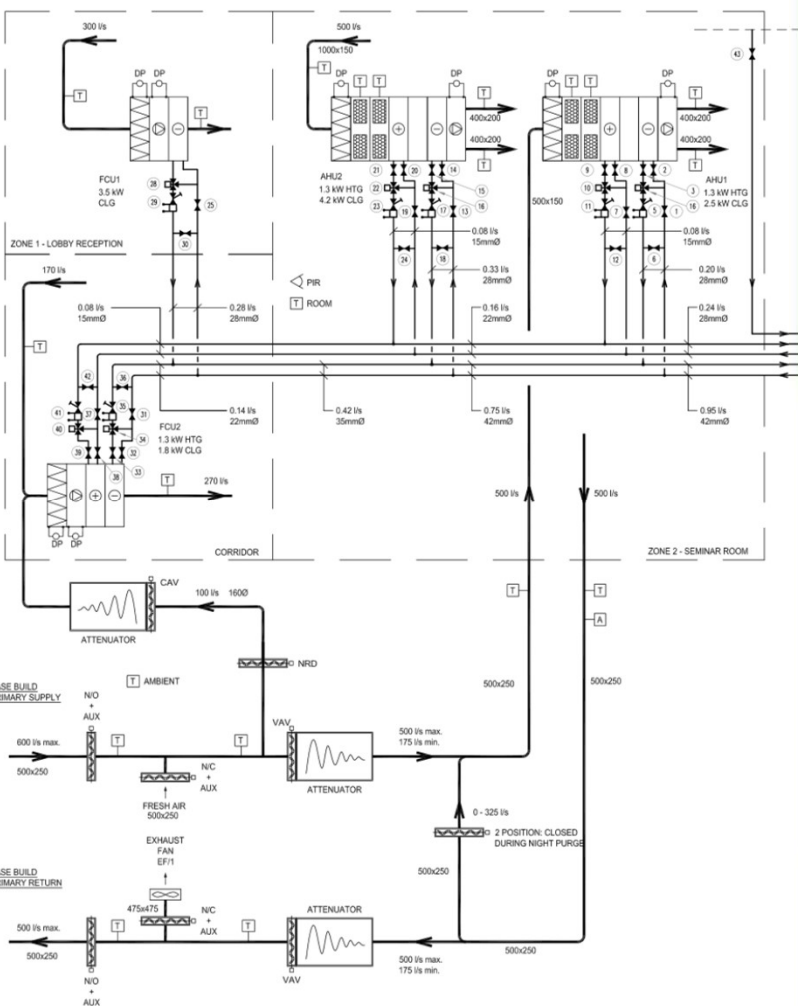
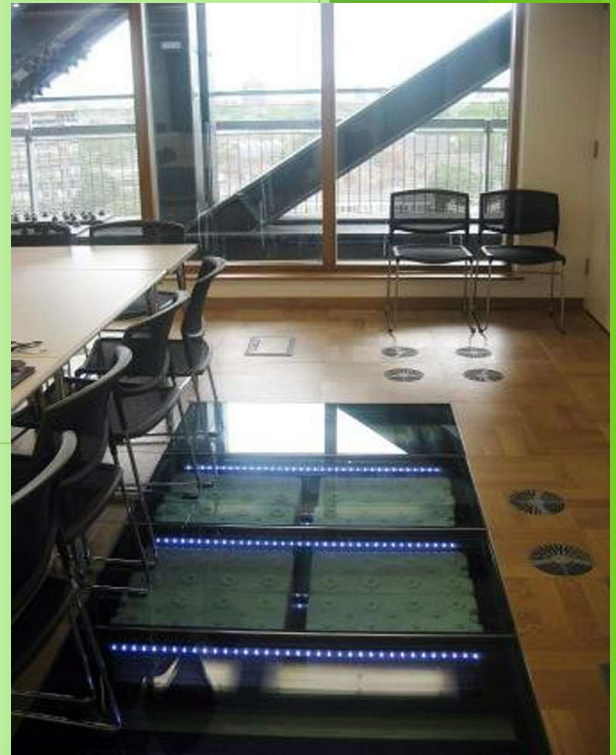


CENTRE FOR RENEWABLE ENERGY IN BUILDINGS (CEREB) PASSIVE AHU COOLING SOUTHBANK UNIVERSITY, LONDON, UK

As part of the drive to demonstrate passive cooling application Southbank University is incorporated PCM modules within the AHU sets. By simply over-night freezing i.e. storing the cool energy in PCM modules day cooling loads within the meeting room is absorbed without using any mechanical cooling machinery.



During normal operation mode additional cooling as well as any latent loads i.e. humidity control loads are handled using a conventional chilled water circuit. Same goes for the heating which is provided via AHU coils supplied from the central heating circuit.

PCM based TES modules filled with **+21°C (70°F)** PCM encapsulated in 500mm (20") x 250mm (10") x 32mm (1 1/4") rectangular HDPE **FlatICE™** containers.

PCM
Modules