

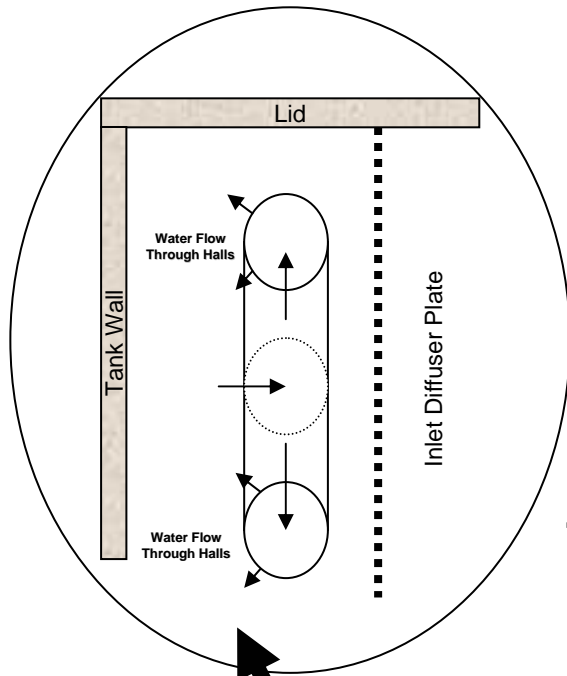


**CIVIC CENTRE
PCM ENERGY STORAGE
APPLICATION**

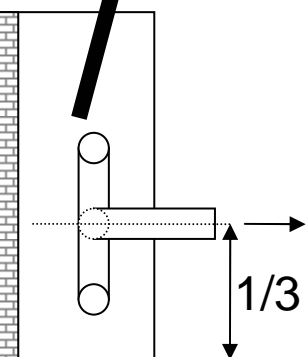
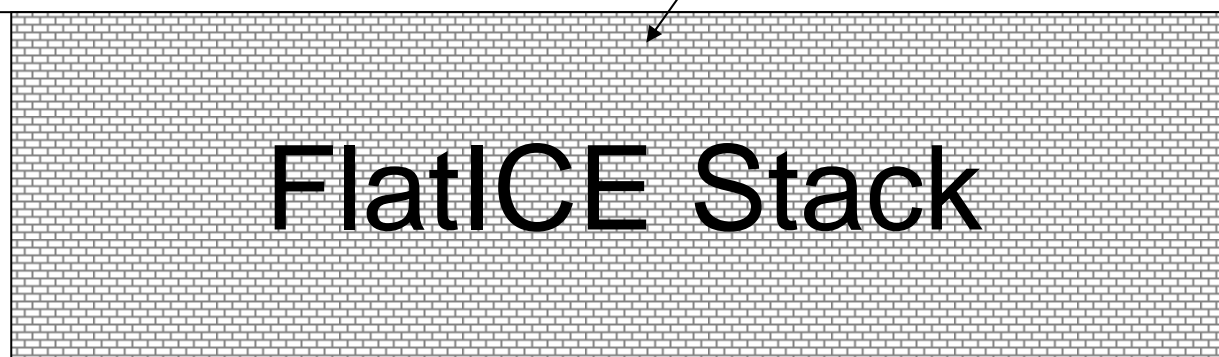
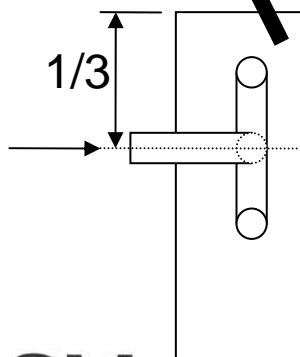
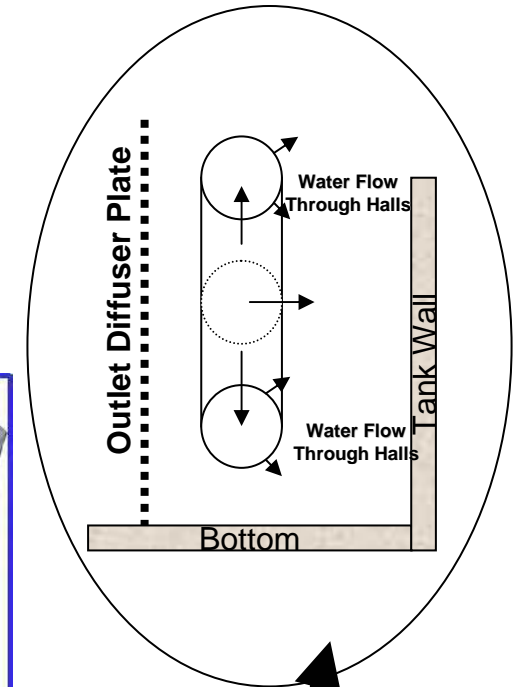


www.pcmproducts.net

FlatICE RECTANGULAR TANK DESIGN

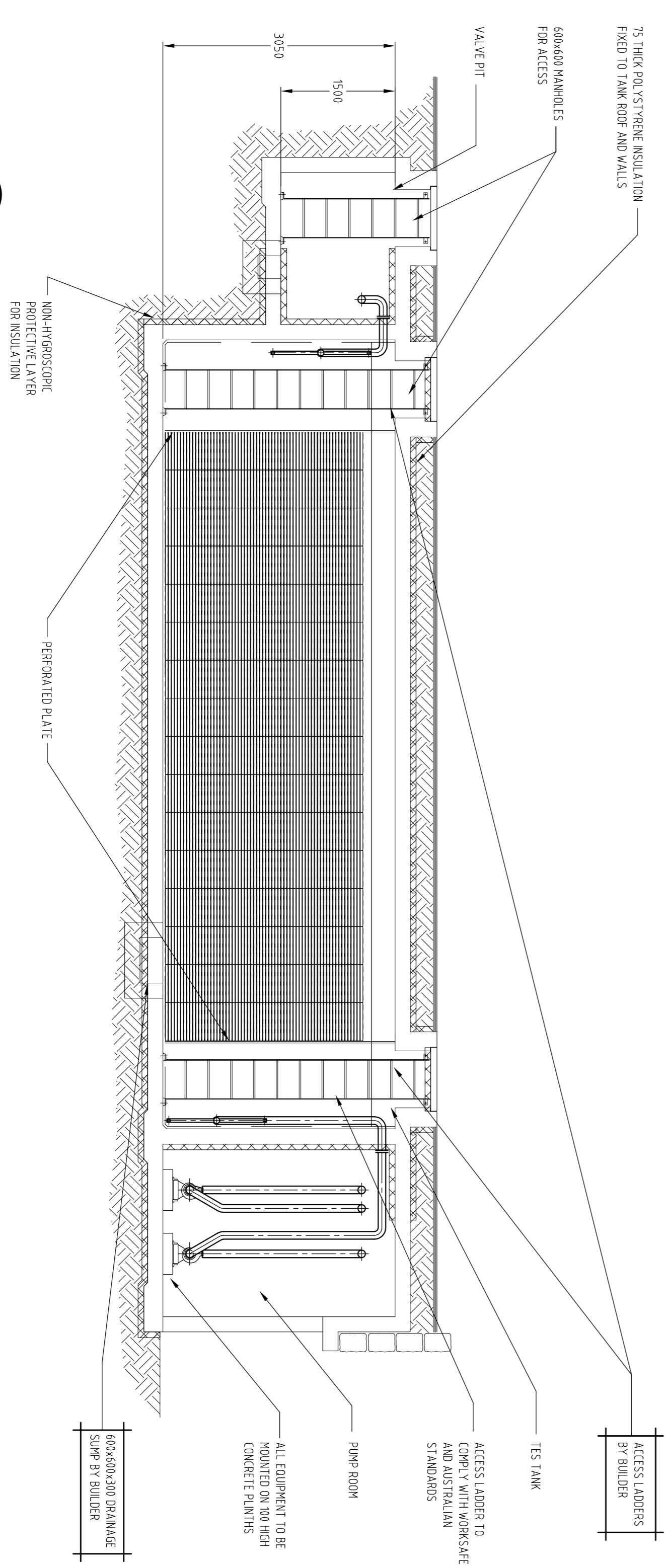
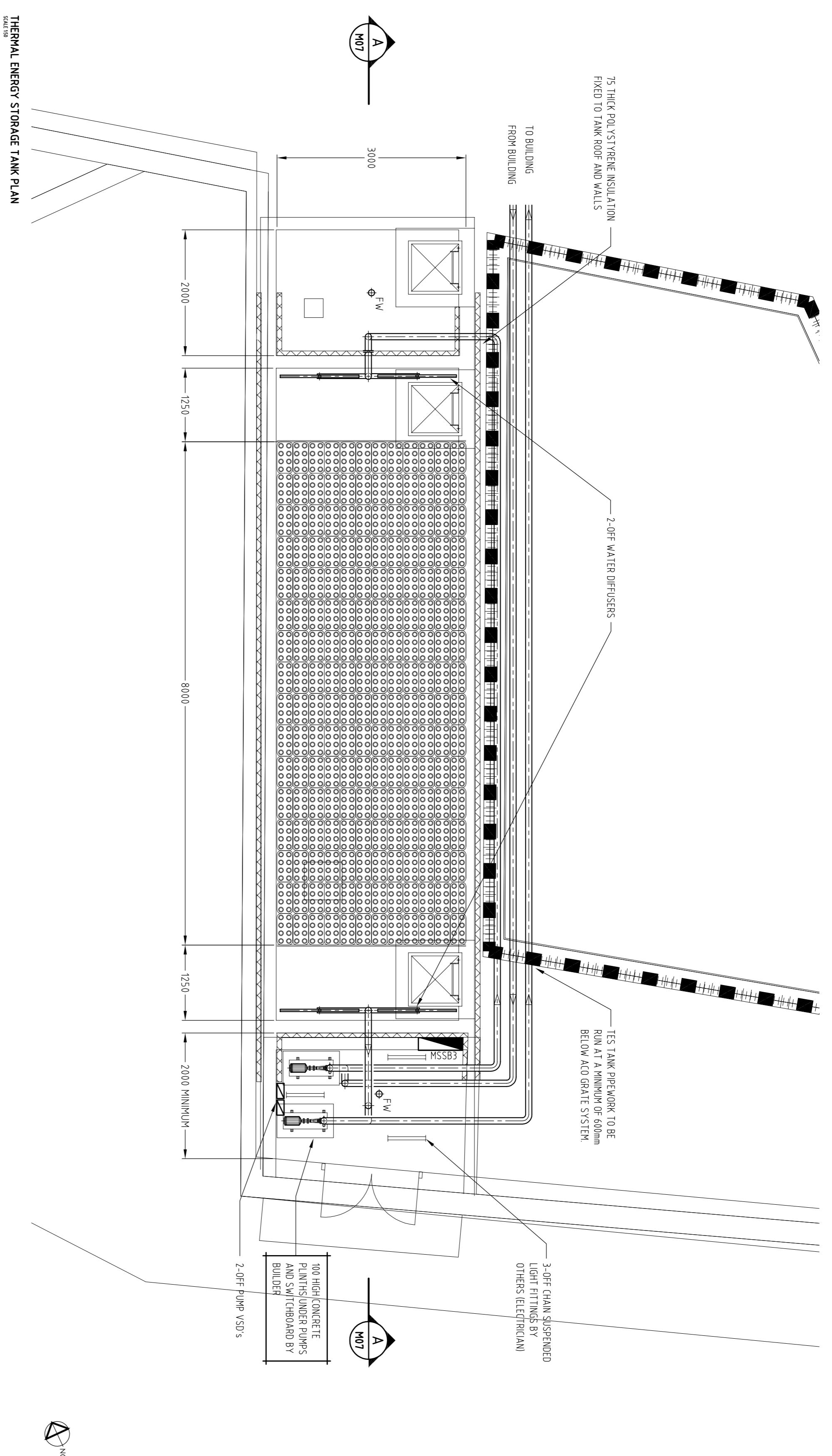


**12,500 FlatICE
(80m³)
containers filled
with
+8°C PCM solution
provides
4 MWh TES
capacity**



NOTES

1 WATER DIFFUSER AND PERFORATED PLATE TO BE DESIGNED BY EFS LTD



SECTION A A-M07
SCALE 1:50

22/01/08	3	PUMP ROOM AND VALVE PIT DIMS ADDED	BH				
22/01/07	2	ISSUED FOR CONSTRUCTION	BH				
04/01/07	1	TENDER ADDENDUM	BH				
06/06/07	0	PRELIMINARY ISSUE	BH		18/02/08	4	REVISED TFS TANK LOCATION
DATE	No.	REVISION	CHNO	DATE	No.	REVISION	CHNO

CITY OF GOSNELLS

250 Albany Highway, Gosnell's Grove, Western Australia
 Telephone: 08 9398 3222
 Email: gossnell@cityofgosnell.com.au

BCA CONSULTANTS

Building Services
 10/11-13/12/11th Floor
 Suite 59 City West Centre
 100 St Georges Terrace
 Perth WA 6000
 Telephone: (81) 9371 6252 Fax: (81) 9371 9755
 www.bcaconsultants.com.au

JAMES CHRISTOU + PARTNERS Architects

21 KINGS PARK ROAD WEST PERTH W.A. 6005
 ARCHITECTURE
 INTERIOR DESIGN
 SPACE PLANNING
 PHONE: +61 8 9371 4077 FAX: +61 8 9371 4048
 EMAIL: james@jcparchitects.com.au

Copyright
 This drawing is copyright and the property of James Christou + Partners. It is not to be used, copied, reproduced, or otherwise disseminated without the written consent of James Christou + Partners. This is an uncontrolled document. Issued for information purposes only unless the checked sections are completed.

CITY OF GOSNELLS CIVIC CENTRE REDEVELOPMENT

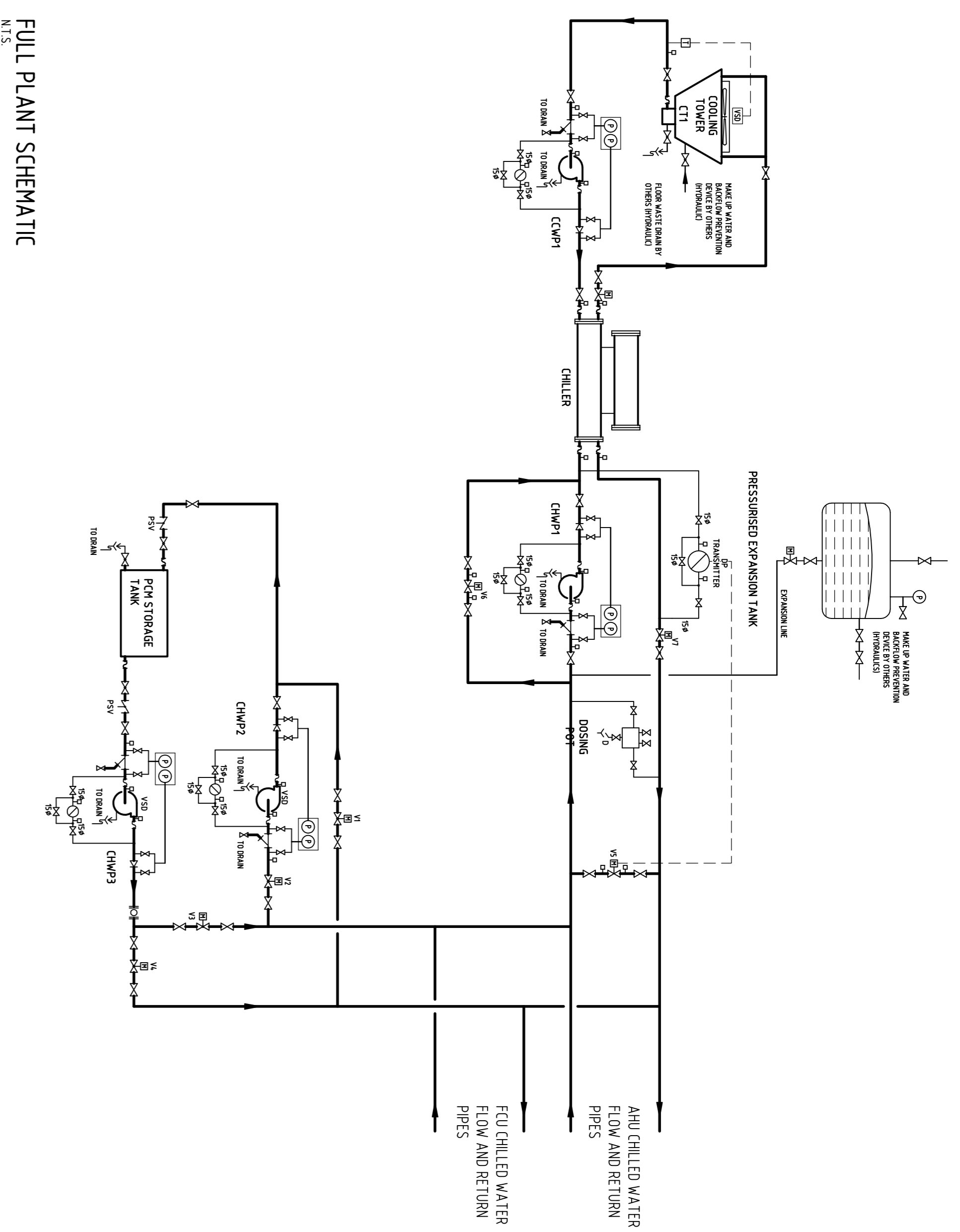
MECHANICAL SERVICES THERMAL ENERGY STORAGE TANK

DRAWN: BH	DATE: 22/01/07
CHECKED:	DATE:
SCALE: 1:50	Figured dimensions take precedence over scale. Verify dimensions on site.
T/B No. 50236	DWG No. M07
	REVISION 4

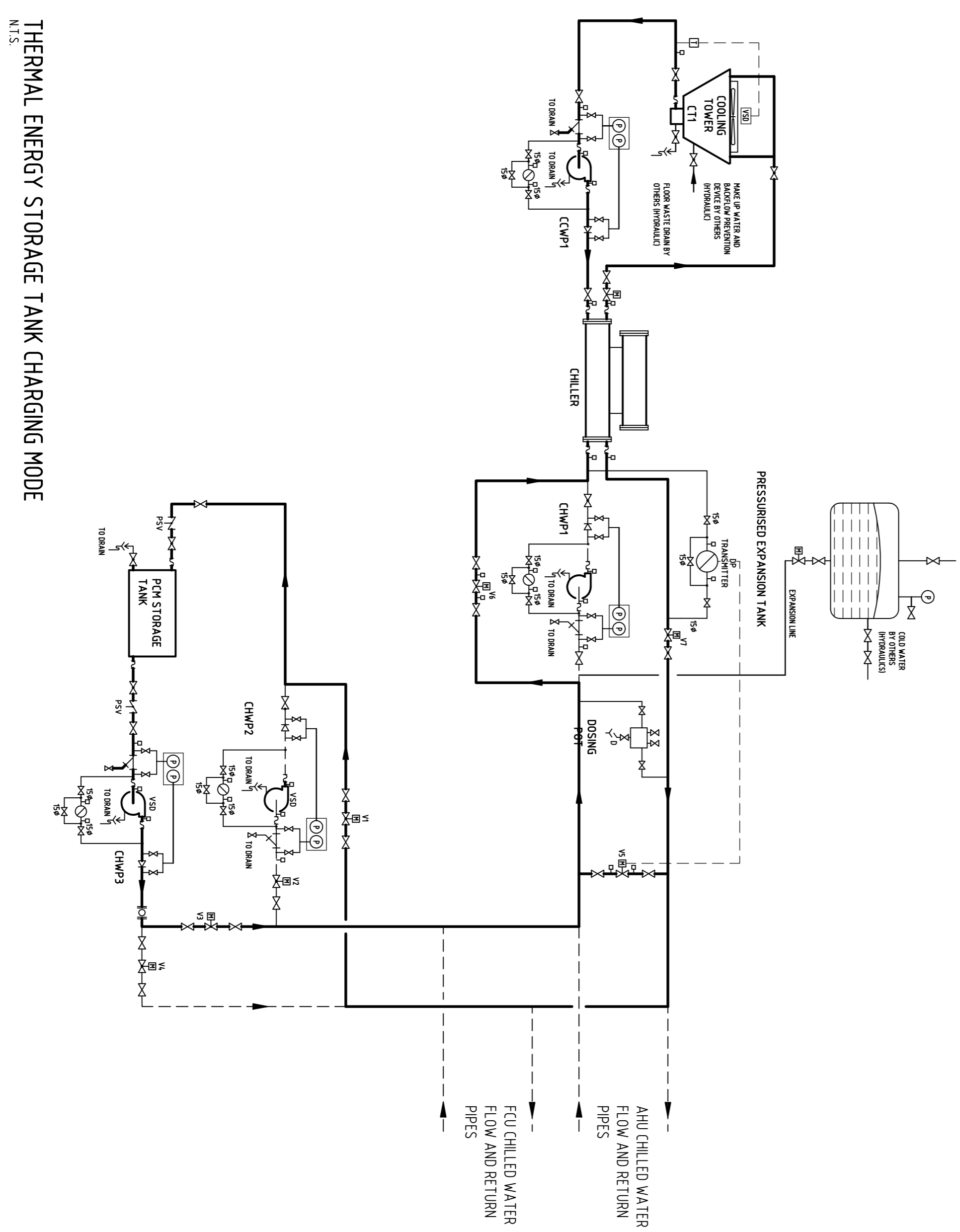
PIPE LEGEND

- CHWF CHILLED WATER FLOW
- CHWR CHILLED WATER RETURN
- CHWP1 CHILLED WATER PUMP No.1
- CCWP1 CONDENSING WATER PUMP No.1
- HWP1 HEATING WATER PUMP No.1
- ISOLATING VALVE
- STAT VALVE FITTED WITH BINDER TEST POINTS
- CHECK VALVE
- STRAINER
- 2 WAY MOTORISED VALVE
- TEMPERATURE SENSOR (DDO)
- TEMPERATURE SENSOR (DDI)
- PRESSURE SENSOR (DDI)
- TEMPERATURE GAUGE
- PRESSURE GAUGE
- BINDER TAPPING POINT
- FLEXIBLE CONNECTION
- FLOW METER
- AUTOMATIC AIR VENT
- PRESSURE SUSTAINING VALVE
- PSV

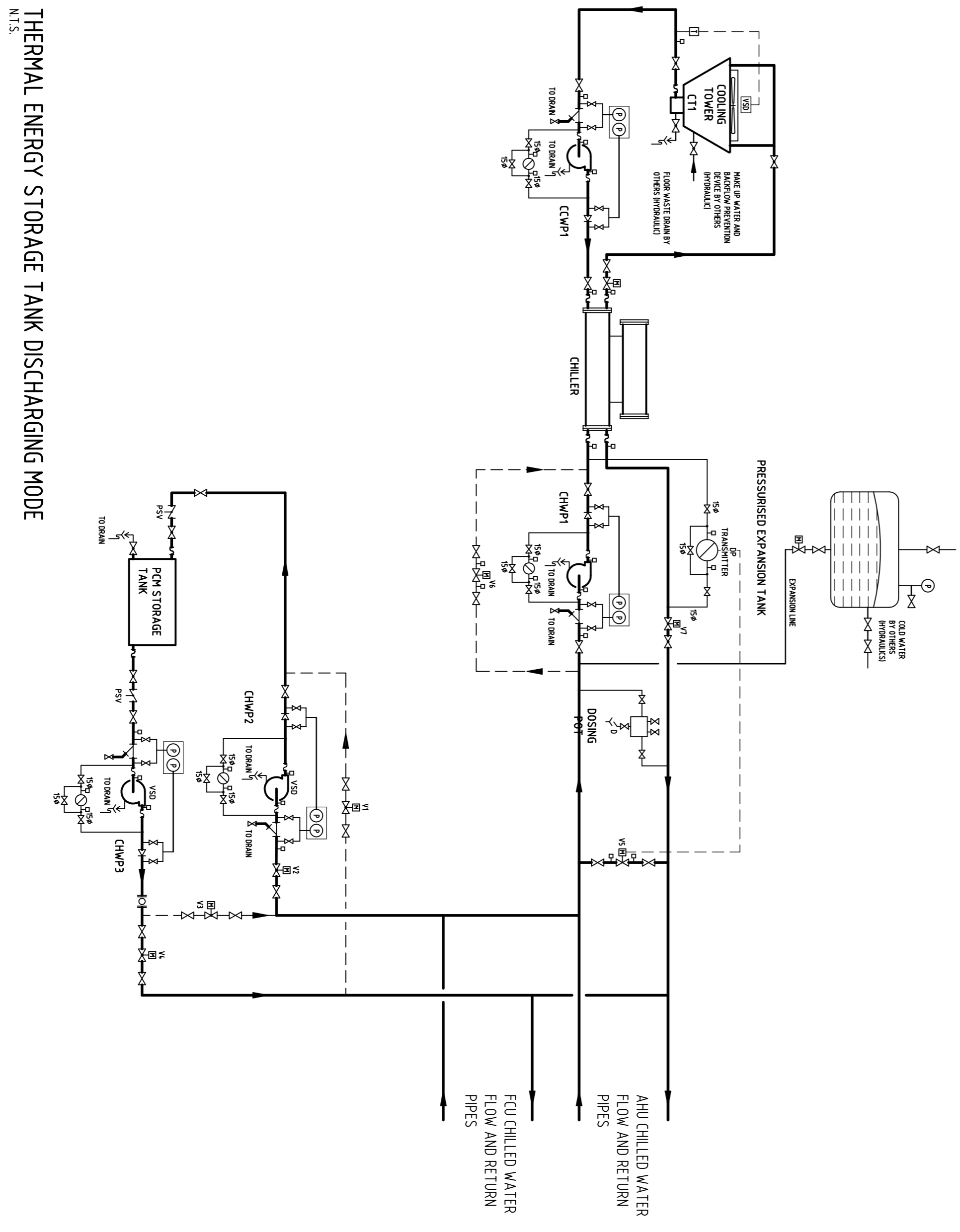
FULL PLANT SCHEMATIC



THERMAL ENERGY STORAGE TANK CHARGING MODE



THERMAL ENERGY STORAGE TANK DISCHARGING MODE



DATE	No.	REVISION	CHNO	DATE	No.	REVISION	CHNO
22/10/07	1	ISSUED FOR CONSTRUCTION	BH				
06/06/07	0	PRELIMINARY ISSUE	BH				

CITY OF GOSNELLS

210 Albany Highway Gosnells 6100
Western Australia

Telephone 08 9391 3222
gossnells@cityofgosnells.com.au

BCA CONSULTANTS

21 Kings Park Road West Perth W.A. 6005
Phone +61 8 9321 4077 Fax +61 8 9321 7248

Architects

JAMES CHRISTOU + PARTNERS

Architects

21 Kings Park Road West Perth W.A. 6005
Phone +61 8 9321 4077 Fax +61 8 9321 7248

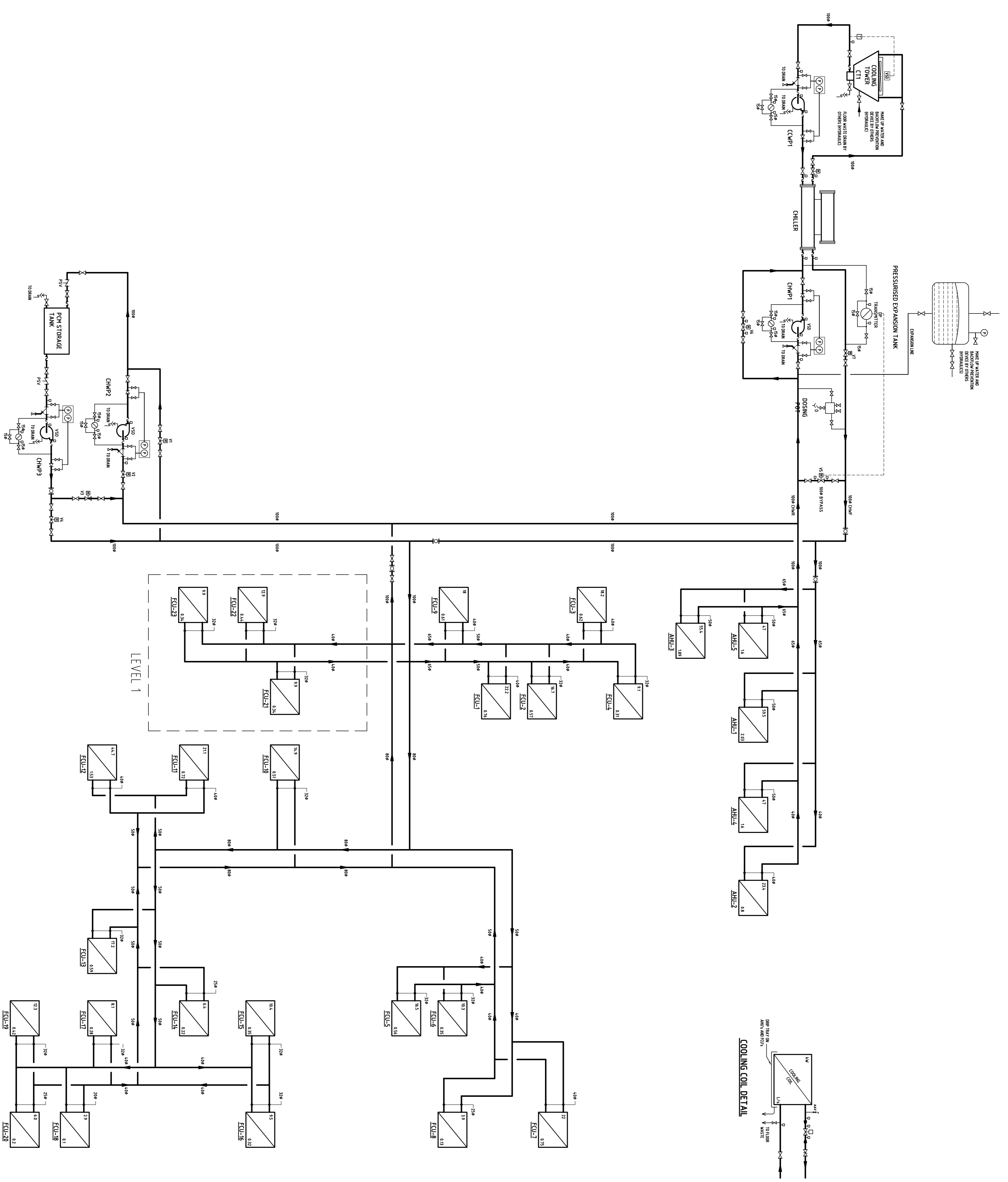
Copyright
This drawing is copyright and the property of James Christou and Partners. It is not to be used, copied, or reproduced in any form without the written consent of James Christou and Partners. This is an uncontrolled document. Issued for information purposes only unless the checked sections are completed.

CITY OF GOSNELLS CIVIC CENTRE REDEVELOPMENT

MECHANICAL SERVICES OPERATIONAL CHILLED WATER SCHEMATIC

DRAWN: BH	DATE: 22/1/07
CHECKED: NTS	Figured dimensions take precedence over scale. Verify dimensions on site.
TIB No. 50236	REVISION 1

NOTES
1. REFER TO DRAWING M08 FOR PIPEWORK LEGEND.



22/10/07	2	ISSUED FOR CONSTRUCTION	BH		
04/07/07	1	ISSUE FOR TENDER ADDENDUM	BH		
06/06/07	0	ISSUE FOR TENDER AND CONSTRUCTION	BH		
DATE	No.	REVISION	CHNO	DATE	No.

CITY OF GOSNELLS
210 Albany Highway Gosnell's 6100
Western Australia
Telephone 08 9398 3222
Fax 08 9398 3222
www.gosnellswa.com.au

BCA CONSULTANTS
Building Services
ABN 62-242 867 106
Suite 5/19 City West Centre
191 Victoria Street Perth WA 6005
Telephone (61 8) 9371 6255 Facsimile (61 8) 9371 9755
www.bcaengineering.com.au

JAMES CHRISTOU + PARTNERS
Architects
21, JONES PARK ROAD WEST PERTH W.A. 6005
ARCHITECTURE
INTERIOR DESIGN
LANDSCAPE ARCHITECTURE
PLANNING
SPACE PLANNING
PHONE + 61 8 9371 4077 FAX SIMILAR + 61 8 9374 7048
EMAIL jchristou@jcp.com.au

COPYRIGHT
This drawing is copyright and the property of the City of Gosnell's and is not to be reproduced or used in any form without the written consent of the City of Gosnell's. This is an uncontrolled document issued for information purposes only unless the checked sections are completed.

CITY OF GOSNELLS
CIVIC CENTRE REDEVELOPMENT
MECHANICAL SERVICES
CHILLED WATER SCHEMATIC

DRAWN: BH	DATE: 22/1/07
CHECKED: NIS	DATE:
SCALE: NTS	Figured dimensions take precedence over scale. Verify dimensions on site.
TIB No. 50236	DWG No. M09
	REVISION 2