

# The Royal Wolverhampton



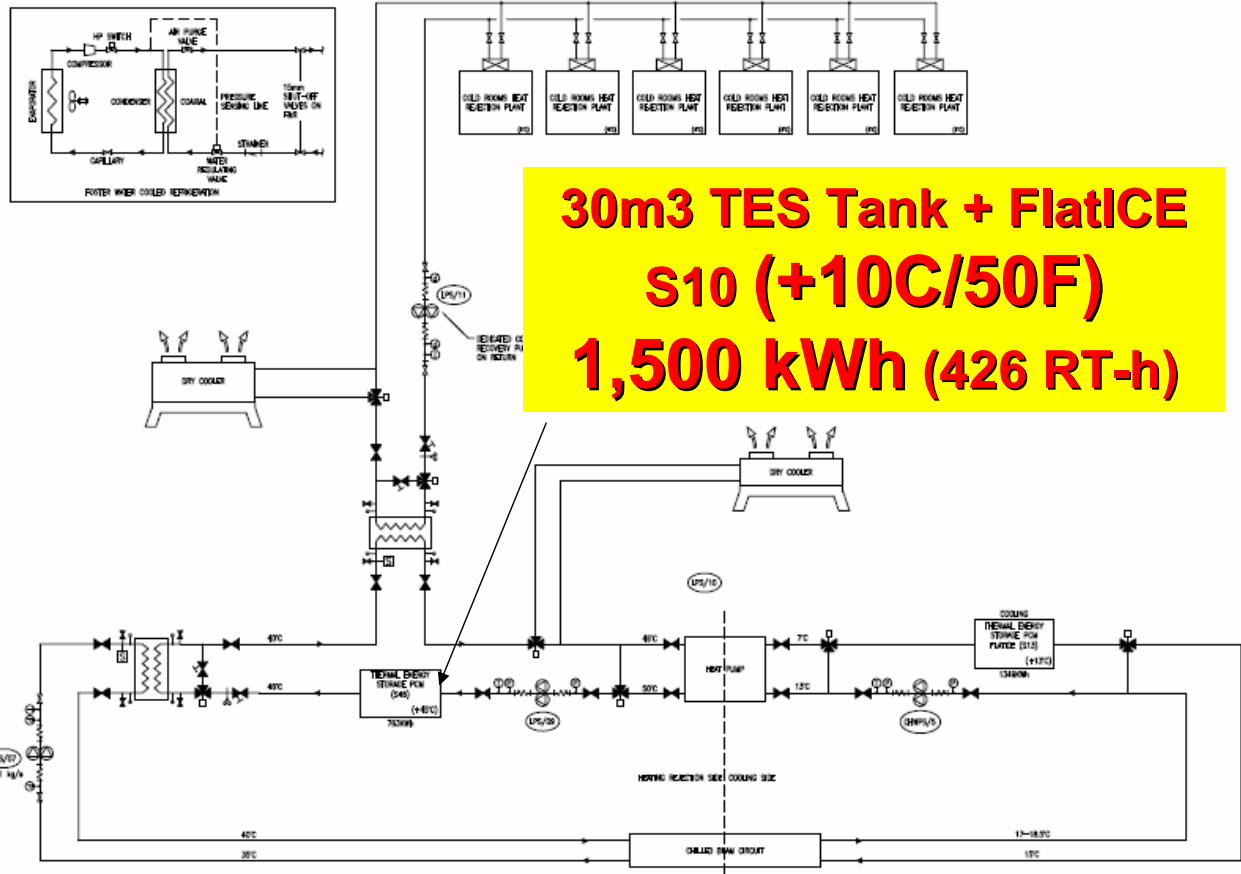
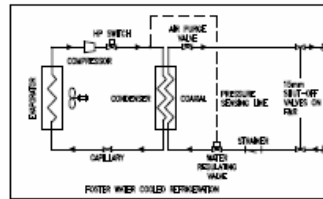
NHS Trust



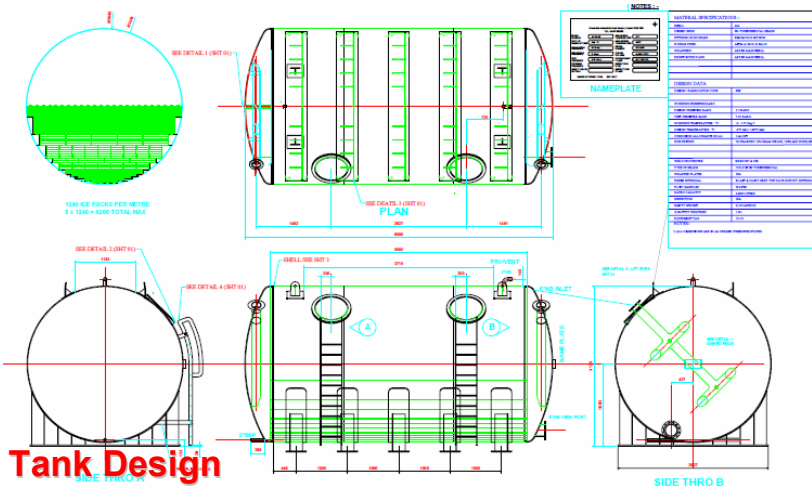
FlatICE Loading



PCM Tank



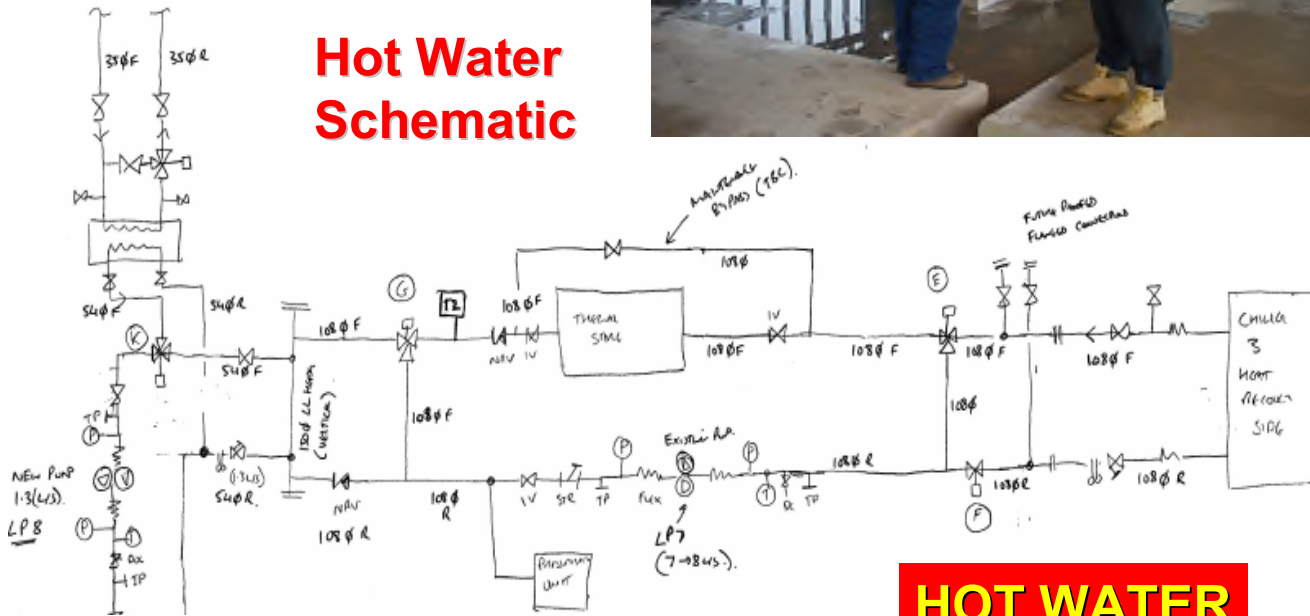
**30m<sup>3</sup> TES Tank + FlatICE  
S10 (+10C/50F)  
1,500 kWh (426 RT-h)**



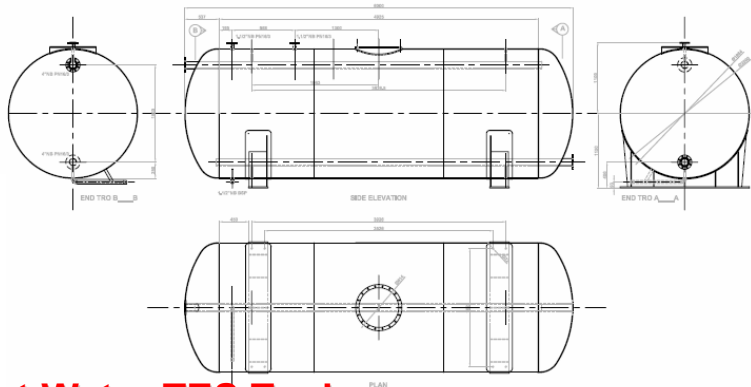
Tank Design



**Hot Water Schematic**



**Hot Water TES Tank Diffuser Set up**



**Hot Water TES Tank**

**HOT WATER TES TANK**  
 20 m<sup>3</sup>  
 (5,300 USG)  
 930 kWh  
 (3,173 MBtu)



**Hot Water TES Tank**