

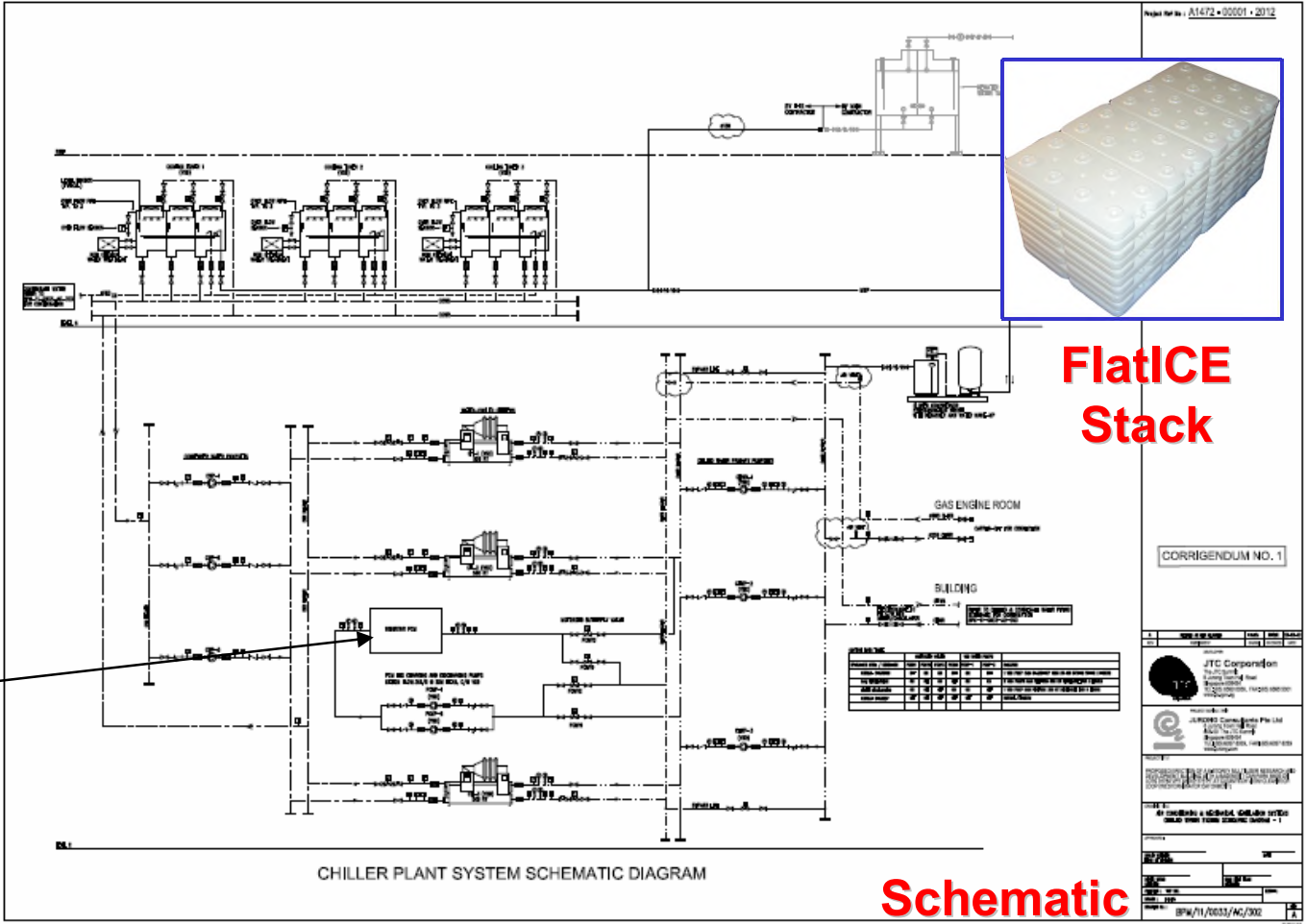


CleanTech-TWO Singapore



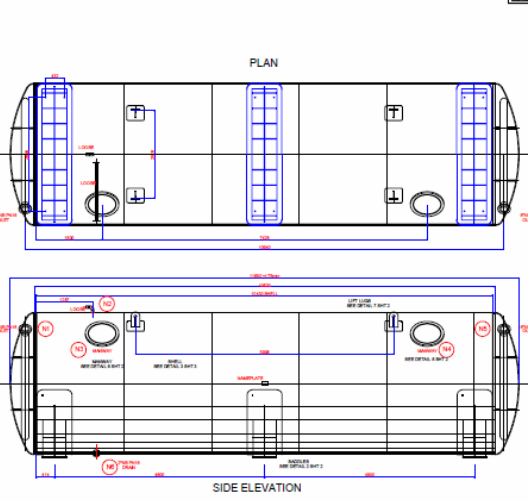
FlatICE Shipment

28,800 FlatICE
S11.5 (11.5C/52.7F)
7,200 kWh
(2,000 RT-h)



FlatICE Stack

Table with technical specifications and material details for the PCM tank design.



PCM Tank Design

CORRIGENDUM NO. 1

Table with project details, including JTC Corporation information and project specifications.

Schematic